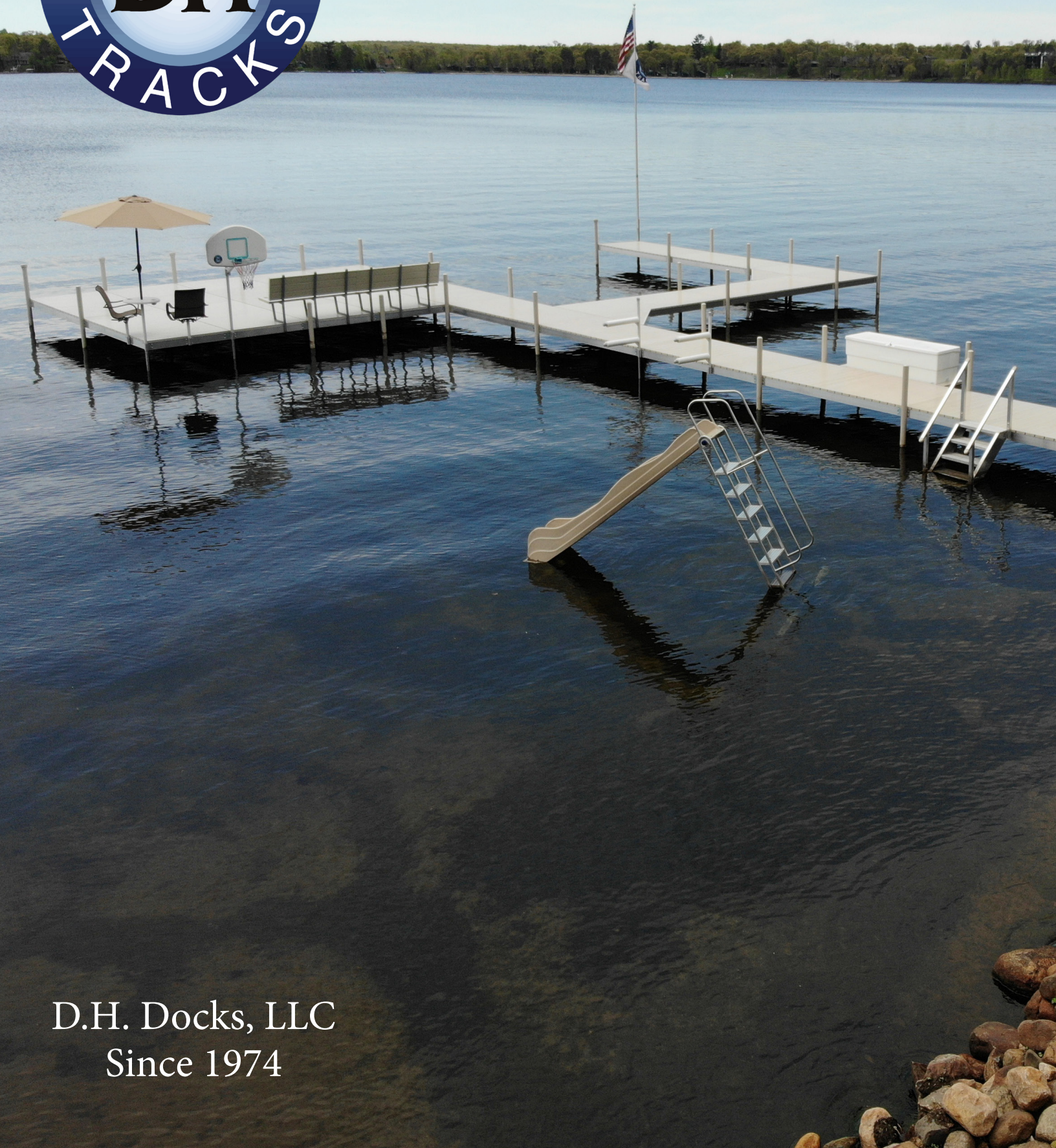




SETTING THE STANDARD IN  
WATERFRONT EQUIPMENT  
FOR 50 YEARS



D.H. Docks, LLC  
Since 1974



D.H. Docks are thoughtfully designed and manufactured with the ease of installation, longevity, functionality and visual appeal in mind. We offer a **LIFETIME WARRANTY** on all our D.H. Aluminum Dock Frames.



## INSTALLATION

- Each section consists of 3 pieces; an aluminum frame and two decking panels
- The male and female connecting hardware allows the sections to easily fit together
- The only tools required are a ratchet to tighten the setscrews on the pipe brackets and a level



## STABILITY

- Our frame is welded for maximum strength
- Every component used to build our frames are non-corrosive and was chosen with strength in mind
- Dock sections are supported by schedule 40 galvanized pipes and 11" cast aluminum bases

## VERSATILITY

Your dock is an extension of your lake experience. Our sectional docks offer the versatility to match your unique space and needs. Work with our team to customize your dock configuration for the perfect length, platform, and layout. Need to make changes or additions over the years? Easy. Your D.H. Dock system grows and changes as you do for the ultimate lakeside living.

## DECKING OPTIONS

### BROCK VINYL

- LIFETIME WARRANTY!
- Available in 2 colors and 2 textures
- Low maintenance
- Made of high-impact weather resistant vinyl
- Has 20% more ultraviolet inhibitors than competitors
- Formula prevents denting, splitting, cracking or breaking and is resistant to blistering, flaking, corroding and peeling
- ADA (American Disabilities Act) complaint with the addition of handrails

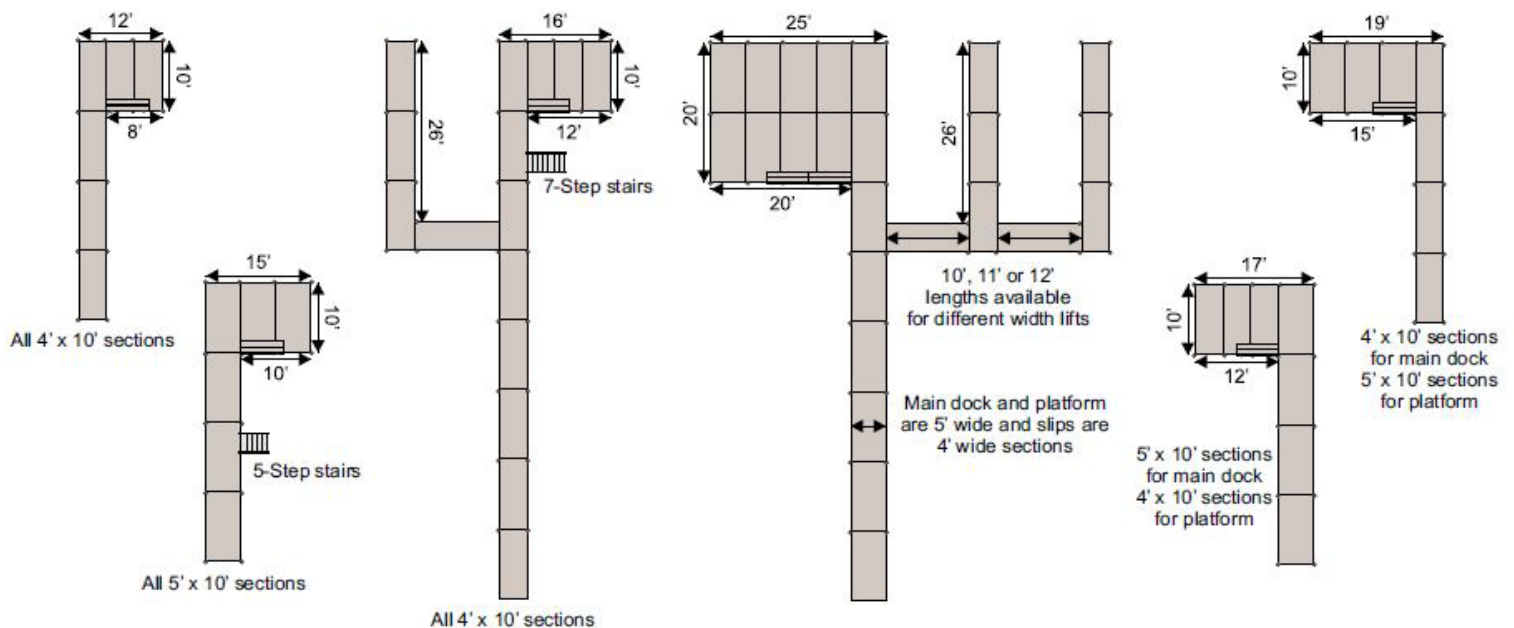


### CEDAR

- Built from the finest cedar
- Panels are screwed together with non-corrosive screws
- Stringers are screwed from the bottom leaving the surface completely smooth from screws and screw holes

### IPE

- Rated for the highest decay resistance, by the U.S. Forest Labs
- A very strong, dense, and hard wood
- Naturally resist wear, rot, splintering, termites, and chemicals
- Weathers to a handsome silver patina or a sealant/stain can be applied to maintain rich natural color



# D.H. DOCK ACCESSORIES

Lakeside Living® just gets better and better



PATIO SET



DOCK LOCKER



6' BENCH IN BROCK  
VINYL, CEDAR or IPE



SOLAR  
LIGHTS



CEDAR VINYL  
BUMPERS



5, 7 or 9-STEP  
STAIRS



DEEP WATER  
SWAY BRACES



FLAGPOLE  
BRACKET



KAYAK & SUP RACK  
SINGLE OR DOUBLE



BASKETBALL  
HOOP



3 or 4-STEP  
LADDER



4' BROCK  
VINYL BUMPERS



GULL GUARDS  
FOR CANOPIES



LEVELING  
WINCH

Lakeside Living® is a registered trademark of D.H. Docks, LLC

# DOCK HARDWARE

Each corner bracket has the same bolt-hole patterns, allowing our standard frame to be configured in many ways. The simple hook and slot connection is strong and doesn't require the dock sections to be bolted together. Hardware is available to make any conceivable dock layout.



Please note, all hardware is designed for a standard 2" x 6" dock frame construction.



## CORNER PIPE

Maximizes stability and allows a bumper to be placed directly on the corner.



## FEMALE PIPE

Eliminates the need for two pieces of hardware, providing a cleaner appearance. Flip it over for right or left hand side.



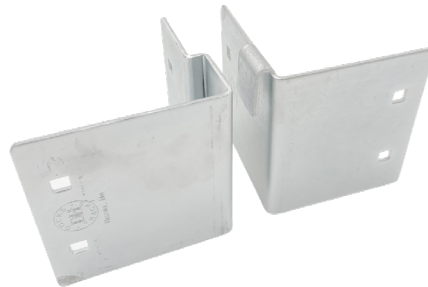
## FLAT PIPE

Used as a way to add a leg or an accessory stub pipe to the frame. Available for 1 1/4" and 1 1/2" I.D. pipe.



## MALE/FEMALE CORNER

Allows perpendicular or parallel connections. Available for right or left hand configurations.



## FEMALE CORNER

Just flip it over for left or right hand side.

## MALE CORNER

Separate brackets for left or right hand side.



## FLAT BRACKETS

Female and male flat brackets are available individually. Used for perpendicular arrangements and many other applications.



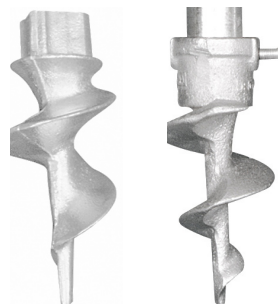
## SETSCREW BASES

Large size provides stability and the hole design reduces suction for easier removal. Fits 1 1/4" or 1 1/2" I.D. pipe.



## CORNER CAPS

Used when no other corner hardware is applied. Strengthens corners on wood docks.



## INSIDE or OUTSIDE AUGERS

Available for pipes with 1 1/4", 1 1/2" and 2" I.D. pipe.



## POST CAPS

Available in a variety of sizes and colors.

## ABOUT D.H. DOCKS

---

D.H. Docks & Tracks started in 1974 as a service company for the Brainerd Lakes Area community, annually installing and removing several hundred docks, lifts, and marine railway systems. When you make your living installing and removing docks, you quickly learn what works and what doesn't. We used our years of experience and knowledge to design a dock system that is easy to install, looks great, and is incredibly durable. We use only the finest materials to construct this product in Nisswa, MN; and have now been building docks for over 50 years with thousands of satisfied customers.

The Morgan family purchased D.H. Docks in April of 2016. With established roots in the area, a passion for the outdoors and lake life, and over 25 years of business ownership, it was a perfect match. We plan to continue serving the community at the local retail store and envision future expansion of the D.H. Docks network.

Our 42,000 square foot facility includes a large retail showroom and manufacturing operation all under one roof. The grounds also feature a beautiful pond to display our docks and accessories with that "on the water" feeling. We look forward to working with you for all of your lakeside living needs.





D.H. Docks, LLC  
23624 Smiley Rd.  
Nisswa, MN 56468  
[www.dhdocks.com](http://www.dhdocks.com)  
218-963-2566

